

Conductive Plastic Linear Sensor

# LP-30FQJ Series

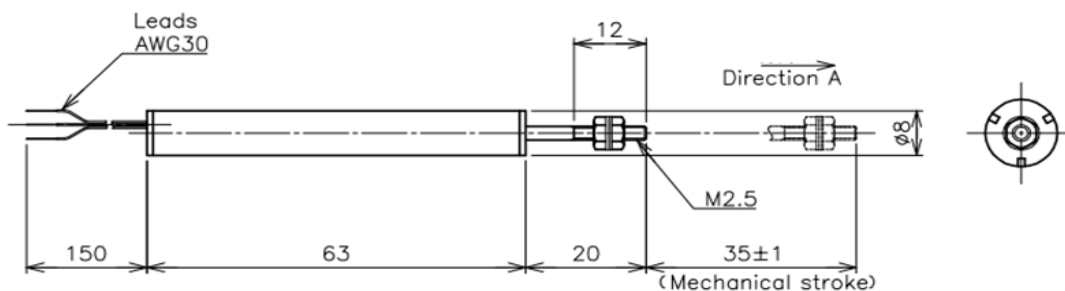


- Conductive Plastic Linear Sensor
- Effective Electrical Travel : 30mm ± 0.5mm
- Independent Linearity : ±1%

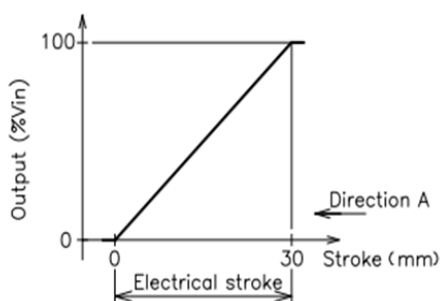
[Material]

- Housing : Aluminum
- Shaft : Stainless Steel

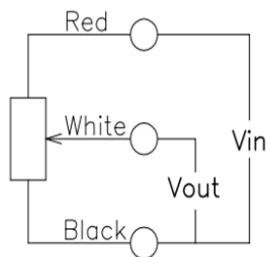
## ■ Dimension (mm)



## ■ Output Characteristics



## ■ Schematic



• Red, White, Black indicate lead colors.

<b>[Model No.]</b>	<b>LP-30FQJ</b>
--------------------	-----------------

<b>Electrical Specifications</b>	
Effective Electrical Travel	30 mm $\pm$ 0.5 mm
Total Resistance	1 K $\Omega$
Total Resistance Tolerance	$\pm$ 20 %
Independent Linearity	$\pm$ 1 %
Rated Dissipation	0.9W/70°C
Output Smoothness	MAX. 0.1%
Insulation Resistance	MIN. 100M $\Omega$ /DC 500V
Dielectric Strength	AC500 V/ 1 Minute
Temperature Coefficient of Resistance	$\pm$ 400 ppm/K

<b>Mechanical Specifications</b>	
Friction	MAX. 0.3 N
Mass	Approx. 15 g

#### ■ Accessories

M3 Nut

Plain Washer      2 pieces each

#### ■ Handling Instruction

- To avoid burnout of resistive element, do not supply more than 1mA current to terminal white.
- Miswiring might cause burnout of resistive element.
- To reduce sliding noise, add load resistance should be more than 100times and less than 1000times of total resistance.
- Slight continuous vibration such as dither might cause short lifetime of the sensor.